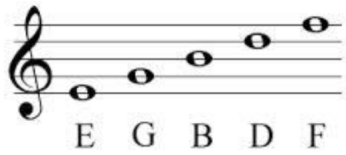
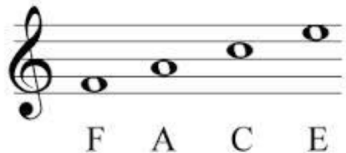


RSL Grade 8 Theory

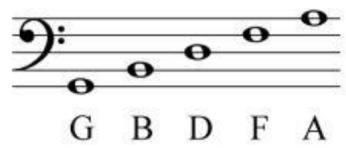
Pitch Names



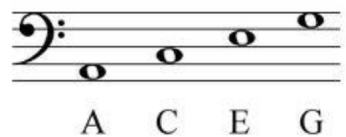
Every **G**ood **B**oy **D**eserves **F**ootball



Spells **F**ACE



Great **B**ig **D**ogs **F**righTen **A**untie



All **C**ows **E**at **G**rass

Accidentals - Sharp, Flat & Natural

Accidentals sit next to notes, but be sure to always check the key signatures too. (Tip: if the key has accidentals, check all octaves not just the one the key signature shows)



Flat notes drop by a semitone/half step



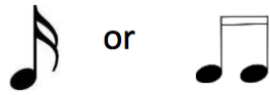
Sharp notes raise by a semitone/half step



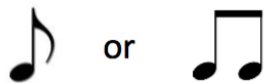
Natural notes are in their original, "natural" position

RSL Grade 8 Theory

Note Values



Semiquaver/Sixteenth 1/4 beat



Quaver/Eighth 1/2 beat



Crotchet/Quarter 1 beat



Minim/Half 2 beats



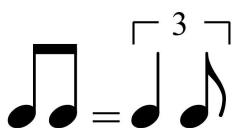
Semibreve/Whole 4 beats

Dotted Rhythms



A dot means you add half the note value again

Swung Rhythm Marking



Each pair of quavers (eighth) are played as a crotchet (quarter) and a quaver tied as a triplet

RSL Grade 8

Theory

Rests



Semiquaver/Sixteenth 1/4 beat



Quaver/Eighth 1/2 beat



Crotchet/Quarter 1 beat



Minim/Half 2 beats



Semibreve/Whole 4 beats

Time Signatures



Top Number

How many beats per bar

Bottom Number

What type of beats you're counting in:

- 2 minim/half
- 4 crotchet/quarter
- 8 quaver/eighth

RSL Grade 8

Theory

Key Signatures



The image shows two staves of musical notation. The top staff contains eight measures, each with a key signature symbol (sharps) and a corresponding key name below it. The bottom staff contains eight measures, each with a key signature symbol (flats) and a corresponding key name below it.

Sharp Key Signature	Flat Key Signature
C major	C major
A minor	A minor
G major	F major
E minor	D minor
D major	B♭ major
B minor	G minor
A major	E♭ major
F# minor	C minor
E major	A♭ major
C# minor	F minor
B major	D♭ major
G# minor	B♭ minor
F# major	G♭ major
D# minor	E♭ minor
C# major	C♭ major
A# minor	A♭ minor

Sharp Key Signatures:

1 semi-tone higher than the last sharp **IS** the key signature

Flat Key Signatures:

The 2nd to last (penultimate) flat **IS** the key signature

Relative Minor

The relative minor is 3 semitones lower than the major.

Whether a piece is major or minor can be tricky to decipher from sheet music, here's a few ways that can help:

- Are the first and final chords the tonic (root) of the major or minor key?
- Is there regular use of the tonic (root) and dominant (fifth) of the major or minor key throughout the piece?
- Minor keys tend to use a minor 7th/flattened 7th

Tempo Marking

The tempo marking tells you the speed of the song by how many beats there are per minute.


$$\text{♩} = 120$$

This means there is 120 beats (crotchet/whole notes) per minute

RSL Grade 8

Theory

Dynamic Markings

pianissimo	<i>pp</i>	very soft
piano	<i>p</i>	soft
mezzo piano	<i>mp</i>	slightly soft
mezzo forte	<i>mf</i>	slightly loud
forte	<i>f</i>	loud
fortissimo	<i>ff</i>	very loud
fortepiano	<i>fp</i>	loud then soft
sforzando	<i>sfz</i>	sudden accent
Crescendo		gradually getting louder
Diminuendo		gradually getting quieter

Repeat Marks





First repeat mark tells you where the repeat starts




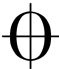


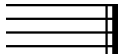
Second repeat mark tells you when to go back to the start of the repeated section and where the repeat ends

RSL Grade 8 Theory

Legato & Staccato

	Staccato	Short/Detached
	Legato/Slur	Smooth/Connected

Additional Markings

D.C	da capo	"from the head"/repeat from the start
D.S	da segno	repeat from segno symbol 
al Coda	"from the sign"	jump to coda symbol 
al Fine	"to the end"	repeat the music through to the 'fine' marking
ad-lib	ad-libitum	Latin for "as you desire" Improvise that section of music
	pause	pause the music for as long as desired
	Double bar lines	Separates sections within the piece
	Final bar line	Signifies the end of the piece

RSL Grade 8

Theory

Recognition of an Interval up to a 10th

0 semitones	Unison
1 semitone	Minor 2nd
2 semitones	Major 2nd
3 semitones	Minor 3rd
4 semitones	Major 3rd
5 semitones	Perfect 4th
6 semitones	Aug 4th/Dim 5th
7 semitones	Perfect 5th
8 semitones	Minor 6th
9 semitones	Major 6th
10 semitones	Minor 7th
11 semitones	Major 7th
12 semitones	Perfect Octave
13 semitones	Minor 9th
14 semitones	Major 9th
15 semitones	Minor 10th
16 semitones	Major 10th