

RSL Grade 1 Theory

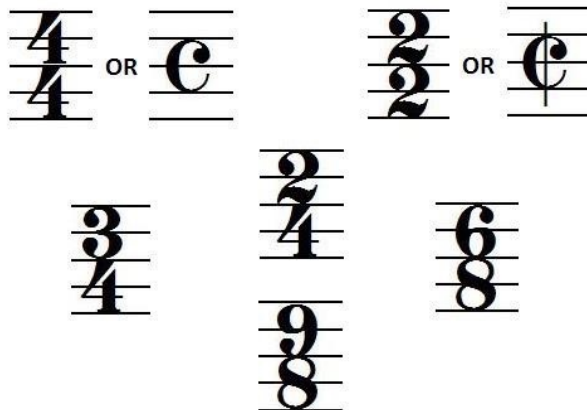
Treble Clef

You'll find a treble clef at the start of each line of music. It tells you you're playing in the Treble Clef, all the higher notes above middle C.



Time Signature

You'll always find the time signature at the beginning of the sheet music. The top number tells you how many beats are in each bar and it looks like two numbers stacked on top of each other, like this..



Note Values



Quaver/Eighth

1/2 beat



Crotchet/Quarter

1 beat



Minim/Half

2 beats



Semi-breve/Whole

4 beats

Rests



Quaver/Eighth

1/2 beat



Crotchet/Quarter

1 beat



Minim/Half

2 beats



Semibreve/Whole

4 beats